

## Horn Creek Hemp

Sample Forbidden V

Strain

<b>0.00%</b>	<b>6.38%</b>	<b>12.65%</b>
$\Delta$ 9 THC	Total CBD	Total Cannabinoids
<b>Not tested</b>	<b>Pass</b>	<b>126.5</b>
Water Activity	Moisture	mg / g Total Cannabinoids



Sample ID

21101560695

Matrix

Flower

Metric

Harvest/Prod Date

Report Created

11/2/2021

Results Valid Until

11/2/2022

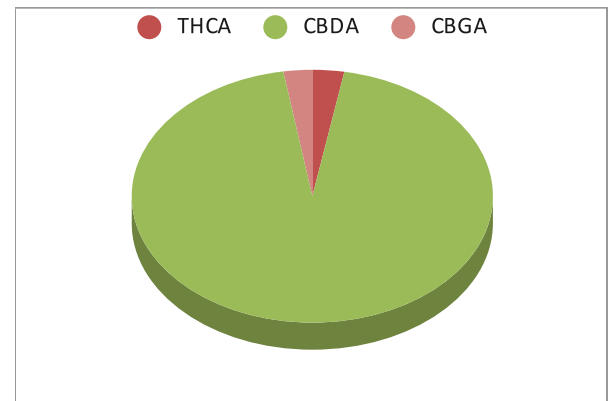
Sample Extracted

10/28/2021 8:30

Sample Analyzed


10/28/2021 13:38

Cannabinoids	%Weight	mg/ gram	LOQ(% /w)
$\Delta$ 9 THC	0.00	0.0	0.05
THCA	0.22	2.2	0.05
Total THC ( $_{THCA} \times 0.877$ )+9THC	0.19	1.9	0.05
CBDA	7.19	71.9	0.05
CBD	0.00	0.0	0.05
CBN	0.00	0.0	0.05
‡ $\Delta$ 8 THC	0.00	0.0	0.05
‡ CBC	0.00	0.0	0.05
‡ CBGA	0.20	2.0	0.05
‡ CBG	0.00	0.0	0.05
‡ CBDV	0.00	0.0	0.05
‡ CBDVA	4.81	48.1	0.05
‡ THCVA	0.24	2.4	0.05



Total THC and Total CBD are calculated values per OAR 333-064-0100. Cannabinoid values for plant matter samples are reported on a dry weight basis. Water activity action level is 0.65Aw. LOQ= Limit of Quantitation. NR=Not Reported 0.00 = Not Detected above LOQ

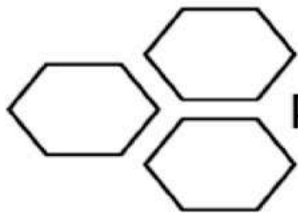
Rogue Research Lab LLC  
 218 E. Main Street, Rogue River, OR 97537  
 Tel. 541-582-1962  
 ORELAP 4107 OLCC 101050708B  
[rogue-research-lab.com](http://rogue-research-lab.com)

  
 Craig Berry - Lab Director  
 11/2/21



ROGUE RESEARCH LAB

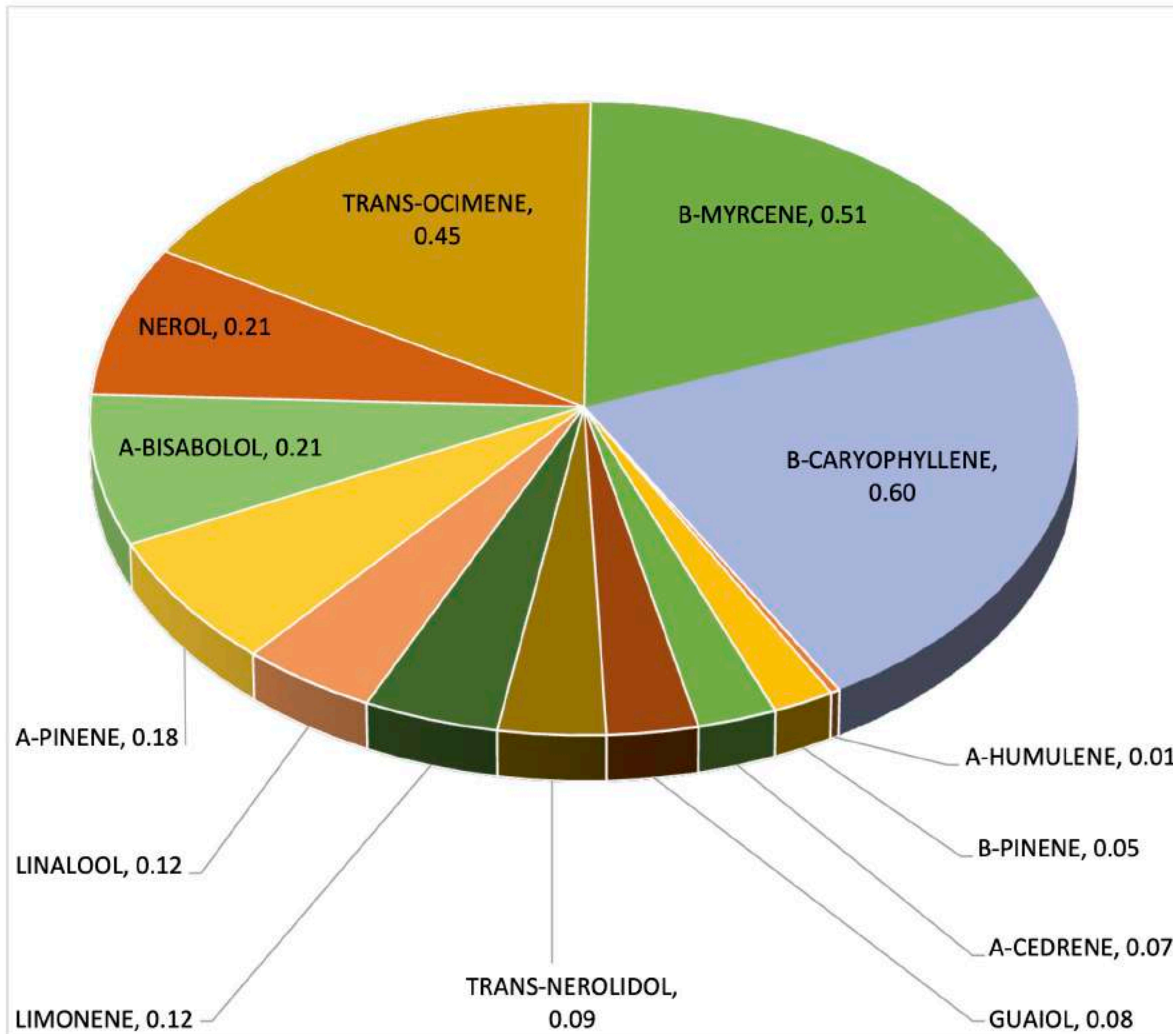
Results pertain to submitted samples only. Rogue Research Lab LLC makes no claims as to the consumer safety or other risks associated with any detected or non-detected amounts of any pesticides, solvents or other adulterants. This report shall not be reproduced, unless in its entirety, without written approval from Rogue Research Lab LLC. Samples were received in good condition and all QC samples met acceptance criteria of the method; data available upon request. Analytes accompanied by dagger (‡) are not within the scope of accreditation and are for informational purposes only.



# Terpene Analysis

**Customer** Horn Creek Hemp  
**Sample Name** Forbidden V  
**File Name** 21101560695  
**Date/Time Extracted:** 10/28/2021 08:30  
**Date/Time Analyzed:** 10/30/2021 12:00  
**Analysis Method/SOP:** LO 001R7/I52121R

TESTED FOR : A-BISABOLOL, A-CEDRENE, A-HUMULENE, A-PHELLANDRENE, A-PINENE, A-TERPINENE, B-CARYOPHYLLENE, B-MYRCENE, BORNEOL, B-PINENE, CAMPHENE, CAMPHOR, CARYOPHYLLENE OXIDE, CEDROL, CIS-NEROLIDOL, D-CARENE, DL-MENTHOL, EUCALYPTOL, FARNESENE, R&L FENCHONE, FENCHYL ALCOHOL, GERANIOL, GERANYL ACETATE, G-TERPINENE, GUAIOL, ISOBORNEOL, ISOPULEGOL, LIMONENE, LINALOOL, NEROL, OCIMENE, P-CYMENE, PULEGONE, SABINENE, TERPINEOL, TERPINOLENE, TRANS-NEROLIDOL, TRANS-OCIMENE, VALENCENE.



*Craig Berry*  
Craig Berry - Lab Director

11/2/2021

Terpene total w/w% 2.69