

Horn Creek Hemp

Sample Oregon Sweetgum

Strain

0.00%	16.48%	19.73%
$\Delta 9$ THC	Total CBD	Total Cannabinoids
Not tested	Pass	197.3
Water Activity	8.76	mg / g Total Cannabinoids
	Moisture	



Sample ID **21101560697**

Matrix Flower

Metric

Harvest/Prod Date

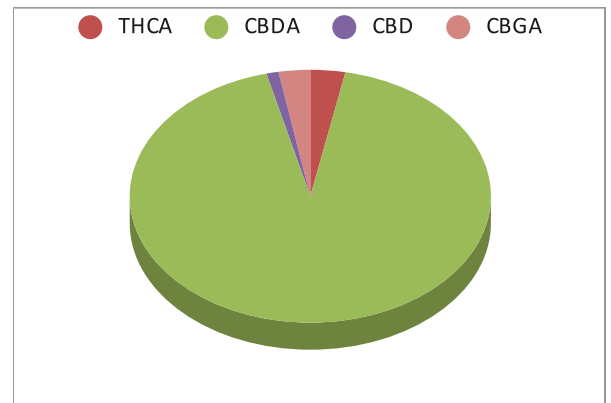
Report Created 11/2/2021

Results Valid Until 11/2/2022

Sample Extracted
10/28/2021 8:30


Sample Analyzed
10/28/2021 14:02

Cannabinoids	%Weight	mg/ gram	LOQ(% /w)
$\Delta 9$ THC	0.00	0.0	0.05
THCA	0.62	6.2	0.05
Total THC (THCA*0.877)+9THC	0.54	5.4	0.05
CBDA	18.34	183.4	0.05
CBD	0.21	2.1	0.05
CBN	0.00	0.0	0.05
‡ $\Delta 8$ THC	0.00	0.0	0.05
‡ CBC	0.00	0.0	0.05
‡ CBGA	0.56	5.6	0.05
‡ CBG	0.00	0.0	0.05
‡ CBDV	0.00	0.0	0.05
‡ CBDVA	0.00	0.0	0.05
‡ THCVA	0.00	0.0	0.05

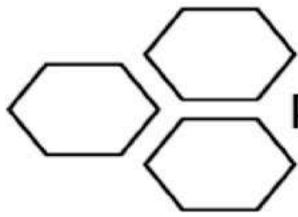


Total THC and Total CBD are calculated values per OAR 333-064-0100. Cannabinoid values for plant matter samples are reported on a dry weight basis. Water activity action level is 0.65Aw. LOQ= Limit of Quantitation. NR=Not Reported 0.00 = Not Detected above LOQ

[Rogue Research Lab LLC](#)
[218 E. Main Street, Rogue River, OR 97537](#)
[Tel. 541-582-1962](#)
[ORELAP 4107 OLCC 101050708B](#)
[rogueresearchlab.com](#)


 Craig Berry - Lab Director
 11/2/21

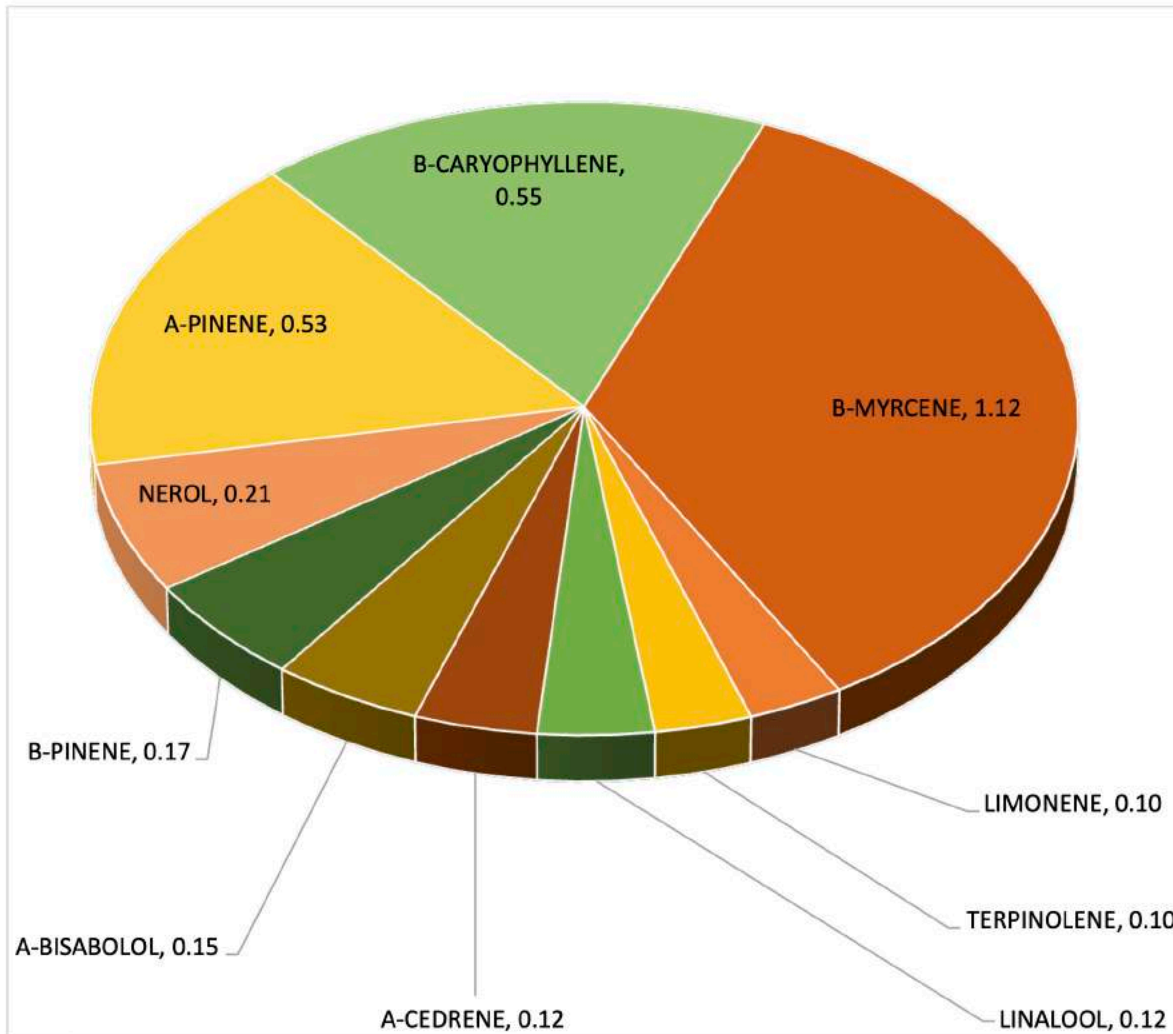
Results pertain to submitted samples only. Rogue Research Lab LLC makes no claims as to the consumer safety or other risks associated with any detected or non-detected amounts of any pesticides, solvents or other adulterants. This report shall not be reproduced, unless in its entirety, without written approval from Rogue Research Lab LLC. Samples were received in good condition and all QC samples met acceptance criteria of the method; data available upon request. Analytes accompanied by dagger (‡) are not within the scope of accreditation and are for informational purposes only.



Terpene Analysis

Customer Horn Creek Hemp
Sample Name Oregon Sweetgum
File Name 21101560697
Date/Time Extracted: 10/28/2021 08:30
Date/Time Analyzed: 10/30/2021 13:14
Analysis Method/SOP: LO 001R7/I52121R

TESTED FOR : A-BISABOLOL, A-CEDRENE, A-HUMULENE, A-PHELLANDRENE, A-PINENE, A-TERPINENE, B-CARYOPHYLLENE, B-MYRCENE, BORNEOL, B-PINENE, CAMPHENE, CAMPHOR, CARYOPHYLLENE OXIDE, CEDROL, CIS-NEROLIDOL, D-CARENE, DL-MENTHOL, EUCALYPTOL, FARNESENE, R&L FENCHONE, FENCHYL ALCOHOL, GERANIOL, GERANYL ACETATE, G-TERPINENE, GUAJOL, ISOBORNEOL, ISOPULEGOL, LIMONENE, LINALOOL, NEROL, OCIMENE, P-CYMENE, PULEGONE, SABINENE, TERPINEOL, TERPINOLENE, TRANS-NEROLIDOL, TRANS-OCIMENE, VALENCENE.



Craig Berry
Craig Berry - Lab Director

11/2/2021

Terpene total w/w% 3.17