

EVIO Labs Medford (pka Kenevir Research)  
 540 East Vilas Road, Suite F, Central Point, OR 97502  
 541-668-7444 / OLCC 010-1001626980D / www.EVIOLabs.com

## Ruby's Max Pain 5000mg Horn Creek Hemp Info Only



Confident Cannabis ID: 2011KR0130.6113

Sample ID: M201914-06

Matrix: Topical

METRC Batch #:

Sampling Method/SOP: Client

Date Sampled: NA

Date Accepted: 11/19/20

Harvest/Process Lot ID:

Batch ID:

Batch Size (g):

Unit for Sale: 1 oz (28.35g)

Harvest/Production Date:

### Cannabinoid Analysis

**FOR INFORMATIONAL USE ONLY - NOT FOR REGULATORY PURPOSES**

Date/Time Extracted: 11/20/20 11:04

Analysis Method/SOP: SOP.T.40.020

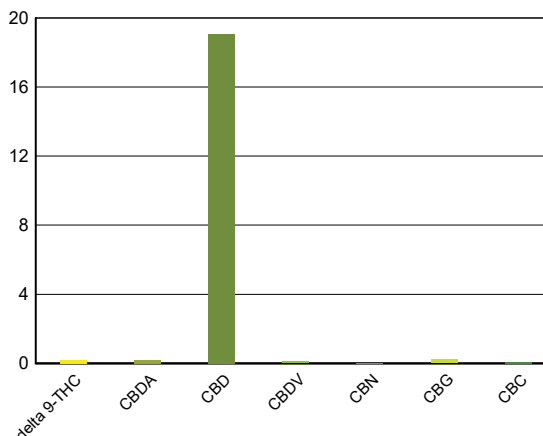
Date/Time Analyzed: 11/23/20 12:57

Sample mass: 28.35g/ mg/unit

Cannabinoids	LOQ(%)	mg/g	mg/unit	Cannabinoid Profile
--------------	--------	------	---------	---------------------

<b>Total THC</b> ((THCA*0.877)+Δ9THC)		<b>1.73</b>	<b>49.0</b>	
<b>Total CBD</b> ((CBDA*0.877)+CBD)		<b>192.62</b>	<b>5440</b>	

THCA	0.040	< LOQ	< LOQ
delta 9-THC	0.040	1.73	49.0
delta 8-THC	0.040	< LOQ	< LOQ
THCV	0.040	< LOQ	< LOQ
CBGA	0.040	< LOQ	< LOQ
CBDA	0.040	1.85	52.4
CBD	0.040	191.00	5410
CBDV	0.040	1.12	31.8
CBN	0.040	< LOQ	< LOQ
CBG	0.040	2.19	62.1
CBC	0.040	0.71	20.1
THCV-A	0.040	< LOQ	< LOQ
CBDV-A	0.040	< LOQ	< LOQ
CBCA	0.040	< LOQ	< LOQ
Sum of tested Cannabinoids	0.040	198.00	5610



"Total THC" and "Total CBD" are calculated values and are an Oregon reporting requirement (OAR 333-064-0100). For Cannabinoid analysis, only delta 9-THC, THCA, CBD, CBDA are ORELAP accredited analytes. Cannabinoid values reported for plant matter are dry weight corrected; Oregon Water Activity action level is 0.65Aw and Oregon Moisture Content action level is 15%. Samples above limit will be highlighted RED; FD = Field Duplicate; LOQ = Limit of Quantitation.

Stephanie Moon  
 Laboratory Director - 11/30/2020

**EVIO Labs Medford (pka Kenevir Research)**  
**540 East Vilas Road, Suite F, Central Point, OR 97502**  
**541-668-7444 / OLCC 010-1001626980D / www.EVIOLabs.com**

## Quality Control

**Batch: M20K109 - SOP.T.30.050 Prep for Cannabinoids**

<b>Blank(M20K109-BLK1)</b>			<b>Extracted: 11/20/20 11:04</b>		<b>Analyzed: 11/20/20 20:16</b>		
<b>Analyte</b>	<b>Result</b>	<b>LOQ</b>	<b>Recovery Limits</b>	<b>Analyte</b>	<b>Result</b>	<b>LOQ</b>	<b>Recovery Limits</b>
THCA	< LOQ	0.002 (%)	< LOQ	delta 9-THC	< LOQ	0.002 (%)	< LOQ
delta 8-THC	< LOQ	0.002 (%)	< LOQ	THCV-A	< LOQ	0.002 (%)	< LOQ
THCV	< LOQ	0.002 (%)	< LOQ	CBDA	< LOQ	0.002 (%)	< LOQ
CBD	< LOQ	0.002 (%)	< LOQ	CBDV-A	< LOQ	0.002 (%)	< LOQ
CBDV	< LOQ	0.002 (%)	< LOQ	CBG	< LOQ	0.002 (%)	< LOQ
CBGA	< LOQ	0.002 (%)	< LOQ	CBN	< LOQ	0.002 (%)	< LOQ
CBCA	< LOQ	0.002 (%)	< LOQ	CBC	< LOQ	0.002 (%)	< LOQ
Sum of tested Cannabinoid:	< LOQ	0.002 (%)	< LOQ				

<b>LCS(M20K109-BS1)</b>			<b>Extracted: 11/20/20 11:04</b>		<b>Analyzed: 11/20/20 20:33</b>		
<b>Analyte</b>	<b>% Recovery</b>	<b>LOQ</b>	<b>Recovery Limits</b>	<b>Analyte</b>	<b>% Recovery</b>	<b>LOQ</b>	<b>Recovery Limits</b>
THCA	92.6	(%)	70-130	delta 9-THC	96.7	(%)	70-130
THCV	89.7	(%)	70-130	CBDA	95.4	(%)	70-130
CBD	97.7	(%)	70-130	CBG	96.8	(%)	70-130
CBGA	94.7	(%)	70-130	CBN	114	(%)	70-130
CBCA	97.3	(%)	70-130	CBC	96.5	(%)	70-130



Stephanie Moon  
 Laboratory Director - 11/30/2020