

EVIO Labs Medford (pka Kenevir Research)
 540 East Vilas Road, Suite F, Central Point, OR 97502
 541-668-7444 / OLCC 010-1001626980D / www.EVIOLabs.com

Special Sauce Quick Dry Horn Creek Hemp Info Only



Confident Cannabis ID: 1910KR0225.5049

Sample ID: M191563-03

Matrix: Hemp

METRC Batch #:

Sampling Method/SOP: SOP.T.20.010

Date Sampled: 10/17/19 09:00

Date Accepted: 10/17/19

Harvest/Process Lot ID:

Batch ID:

Batch Size (g):

Unit for Sale:

Harvest/Production Date:

Cannabinoid Analysis

FOR INFORMATIONAL USE ONLY - NOT FOR REGULATORY PURPOSES

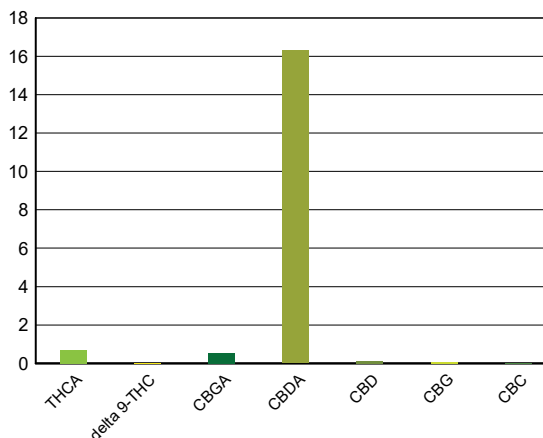
Date/Time Extracted: 10/22/19 10:52

Analysis Method/SOP: SOP.T.40.020

Date/Time Analyzed: 10/22/19 21:47

Cannabinoids	LOQ(%)	mg/g	% weight	Cannabinoid Profile
Total THC ((THCA*0.877)+Δ9THC)		5.89	0.589	
Total CBD ((CBDA*0.877)+CBD)		144.26	14.426	

THCA	0.100	6.72	0.672
delta 9-THC	0.100	< LOQ	< LOQ
CBGA	0.100	5.33	0.533
CBDA	0.100	163.00	16.3
CBD	0.100	1.31	0.131
CBDV	0.100	< LOQ	< LOQ
CBN	0.100	< LOQ	< LOQ
CBG	0.100	< LOQ	< LOQ
CBC	0.100	< LOQ	< LOQ
CBDV-A	0.100	< LOQ	< LOQ
Sum of tested Cannabinoids	0.100	176.00	17.6



"Total THC" and "Total CBD" are calculated values and are an Oregon reporting requirement (OAR 333-064-0100). For Cannabinoid analysis, only delta 9-THC, THCA, CBD, CBDA are ORELAP accredited analytes. Cannabinoid values reported for plant matter are dry weight corrected; Oregon Water Activity action level is 0.65Aw and Oregon Moisture Content action level is 15%. Samples above limit will be highlighted RED; FD = Field Duplicate; LOQ = Limit of Quantitation.

Stephanie Moon
 Laboratory Director - 10/23/2019

EVIO Labs Medford (pka Kenevir Research)
 540 East Vilas Road, Suite F, Central Point, OR 97502
 541-668-7444 / OLCC 010-1001626980D / www.EVIOLabs.com

Quality Control

Batch: M19J154 - ODA Exhibit B/ SOP.T.30.050 Prep for Cannabinoids

Blank(M19J154-BLK1)			Extracted: 10/22/19 10:52		Analyzed: 10/22/19 18:41		
Analyte	Result	LOQ	Recovery Limits	Analyte	Result	LOQ	Recovery Limits
THCA	< LOQ	0.100 (%)	< LOQ	delta 9-THC	< LOQ	0.100 (%)	< LOQ
CBDA	< LOQ	0.100 (%)	< LOQ	CBD	< LOQ	0.100 (%)	< LOQ
CBDV-A	< LOQ	0.100 (%)	< LOQ	CBDV	< LOQ	0.100 (%)	< LOQ
CBG	< LOQ	0.100 (%)	< LOQ	CBGA	< LOQ	0.100 (%)	< LOQ
CBN	< LOQ	0.100 (%)	< LOQ	CBC	< LOQ	0.100 (%)	< LOQ
Sum of tested Cannabinoid:	< LOQ	0.100 (%)	< LOQ				

LCS(M19J154-BS1)			Extracted: 10/22/19 10:52		Analyzed: 10/22/19 18:54		
Analyte	% Recovery	LOQ	Recovery Limits	Analyte	% Recovery	LOQ	Recovery Limits
THCA	90.7	(%)	70-130	delta 9-THC	104	(%)	70-130
CBDA	91.2	(%)	70-130	CBD	100	(%)	70-130



Stephanie Moon
 Laboratory Director - 10/23/2019