



Certificate of Analysis

Sample **Remedy Machine Trim**
Strain **Remedy**



FOR RESEARCH AND DEVELOPMENT ONLY

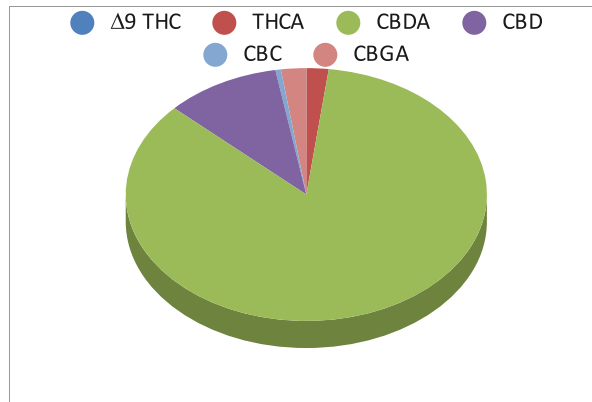
Client Horn Creek Hemp
Sample ID 20061180340
Matrix Flower
Metric NA
Harvest/Prod Date

Report Created 6/23/2020 Results Valid Until 6/23/2021

Sample Extracted 6/22/2020 14:01 Sample Analyzed 6/22/2020 15:20


Cannabinoids %Weight LOQ(% w/w)

Δ9 THC	0.00	0.1
Total THC (THCA*0.877)+9THC	0.289	
Total CBD (CBDA*0.877)+CBD	14.05	
THCA	0.33	0.1
CBDA	14.08	0.1
CBD	1.71	0.1
CBN	0.00	0.1
‡ Δ8 THC	0.00	0.1
‡ CBC	0.08	0.1
‡ CBGA	0.37	0.1
‡ CBG	0.00	0.1
Total Measured Cannabinoids	16.57	



Total THC and Total CBD are calculated values per OAR 333-064-0100. Cannabinoid values for plant matter samples are reported on a dry weight basis. Water activity action level is 0.65Aw. LOQ= Limit of Quantitation. NR=Not Reported ND= Not Detected above LOQ

[Rogue Research Lab LLC](#)
[218 E. Main Street, Rogue River, OR 97537](#)
Tel. 541-582-1962
[ORELAP 4107](#) [OLCC 101050708B](#)
[rogueresearchlab.com](#)


Craig Berry - Lab Director



Results pertain to submitted samples only. Rogue Research Lab LLC makes no claims as to the consumer safety or other risks associated with any detected or non-detected amounts of any pesticides, solvents or other adulterants. This report shall not be reproduced, unless in its entirety, without written approval from Rogue Research Lab LLC. Samples were received in good condition and all QC samples met acceptance criteria of the method; data available upon request. Analytes accompanied by dagger (‡) are not within the scope of accreditation and are for informational purposes only.