



Horn Creek Hemp - Special Sauce Air

Sample ID: G0A0154-08

Matrix: Industrial Hemp

Test ID: 5006743

Source ID:

Date Sampled: 01/13/20

Date Accepted: 01/13/20

Hemp Inc. / Hemp University

Results at a Glance

Total THC : 0.5748 %

Total CBD : 14.96 %

Total Terpenes : 3.023 % PASS



Russell Kuhfeld

Russell Kuhfeld
Quality Officer - 1/15/2020

All QC samples met acceptance criteria of the method; data available upon request. These results relate only to the sample included on this report. The report may not be reproduced except in full, without the written permission of Green Leaf Lab.

Lab results apply to the sample as received, samples were not collected per OAR 333-007 requirements



Horn Creek Hemp - Special Sauce Air

Sample ID: G0A0154-08

Matrix: Industrial Hemp

Test ID: 5006743

Source ID:

Date Sampled: 01/13/20

Date Accepted: 01/13/20

Hemp Inc. / Hemp University

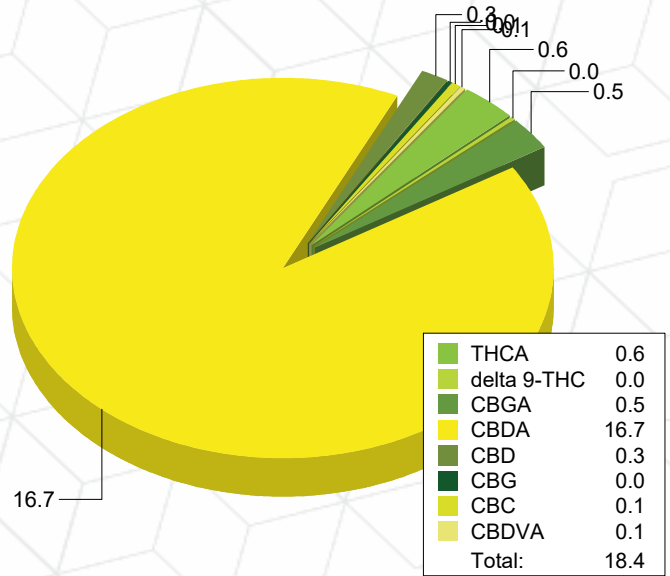
Potency Analysis

Date/Time Extracted: 01/14/20 10:49

Analysis Method/SOP: 215

Batch Identification: 2003018

Cannabinoids	LOQ (%)	% by Wt.	mg/g	Cannabinoids Profile
Total THC	0.009080	0.5748	5.748	
Total CBD	0.008300	14.96	149.6	
THCA	0.002920	0.6238	6.238	
delta 9-THC	0.009080	0.02779	0.2779	
delta 8-THC	0.004490	< LOQ	< LOQ	
Exo-THC	0.004175	< LOQ	< LOQ	
THCV	0.005055	< LOQ	< LOQ	
THCVA	0.001885	< LOQ	< LOQ	
CBD	0.006220	0.2897	2.897	
CBDA	0.008300	16.73	167.3	
CBDV	0.005000	< LOQ	< LOQ	
CBDVA	0.001640	0.07632	0.7632	
CBN	0.002990	< LOQ	< LOQ	
CBG	7.900E-4	0.03786	0.3786	
CBGA	7.900E-4	0.5461	5.461	
CBC	0.008965	0.08632	0.8632	



Total THC = delta 9-THC + (THCA * 0.877)

Total CBD = CBD + (CBDA * 0.877)

LOQ=Limit of Quantification, the lowest measurable concentration of an analyte.



ISO 17025
ACCREDITED
LABORATORY

Russell Kuhfeld

Russell Kuhfeld
Quality Officer - 1/15/2020

All QC samples met acceptance criteria of the method; data available upon request. These results relate only to the sample included on this report. The report may not be reproduced except in full, without the written permission of Green Leaf Lab.

Lab results apply to the sample as received, samples were not collected per OAR 333-007 requirements



Horn Creek Hemp - Special Sauce Air

Sample ID: G0A0154-08

Matrix: Industrial Hemp

Test ID: 5006743

Source ID:

Date Sampled: 01/13/20

Date Accepted: 01/13/20

Hemp Inc. / Hemp University

Terpene Analysis

Date/Time Extracted: 01/14/20 10:49

Analysis Method/SOP: 204

Monoterpenes	%	mg/g	Monoterpenes	%	mg/g
Camphene	0.01010	0.101	Camphor	< LOQ	< LOQ
3-Carene	< LOQ	< LOQ	alpha-Cedrene	< LOQ	< LOQ
Cedrol	< LOQ	< LOQ	Endo-fenchyl alcohol	0.02539	0.2539
Eucalyptol	< LOQ	< LOQ	Fenchone	< LOQ	< LOQ
Geraniol	< LOQ	< LOQ	Geranyl acetate	< LOQ	< LOQ
Hexahydrothymol	< LOQ	< LOQ	Isoborneol	< LOQ	< LOQ
Isopulegol	< LOQ	< LOQ	Limonene	0.1079	1.079
Linalool	0.06503	0.6503	p-Mentha-1,5-diene	< LOQ	< LOQ
beta-Myrcene	1.614	16.14	Ocimene	0.02918	0.2918
alpha-Pinene	0.1578	1.578	beta-Pinene	0.06556	0.6556
Pulegone	< LOQ	< LOQ	Sabinene	< LOQ	< LOQ
Sabinene hydrate	< LOQ	< LOQ	gamma-Terpinene	< LOQ	< LOQ
alpha-Terpinene	< LOQ	< LOQ	Terpineol	0.02191	0.2191
Terpinolene	< LOQ	< LOQ	B Y-Terpineol	< LOQ	< LOQ
Nerol	< LOQ	< LOQ	A-Terpineol	0.03477	0.3477
Borneol	< LOQ	< LOQ	Ocimene isomer II	0.02918	0.2918
Ocimene isomer I	< LOQ	< LOQ			
Sesquiterpenes	%	mg/g	Sesquiterpenes	%	mg/g
alpha-Bisabolol	0.1111	1.111	beta-Caryophyllene	0.2679	2.679
Caryophyllene Oxide	0.02243	0.2243	Guaiol	0.04593	0.4593
alpha-Humulene	0.08215	0.8215	trans-Nerolidol	0.03105	0.3105
Valencene	< LOQ	< LOQ	cis-Nerolidol	0.3521	3.521
Total Terpenes	3.023	30.23			

<LOQ - Results below the Limit of Quantitation - Terpenes profile/analysis are not accredited to ORELAP TNI 2009 Quality Standards.



Russell Kuhfeld

Russell Kuhfeld
Quality Officer - 1/15/2020

All QC samples met acceptance criteria of the method; data available upon request. These results relate only to the sample included on this report. The report may not be reproduced except in full, without the written permission of Green Leaf Lab.

Lab results apply to the sample as received, samples were not collected per OAR 333-007 requirements



Horn Creek Hemp - Special Sauce Air

Sample ID: G0A0154-08

Matrix: Industrial Hemp

Test ID: 5006743

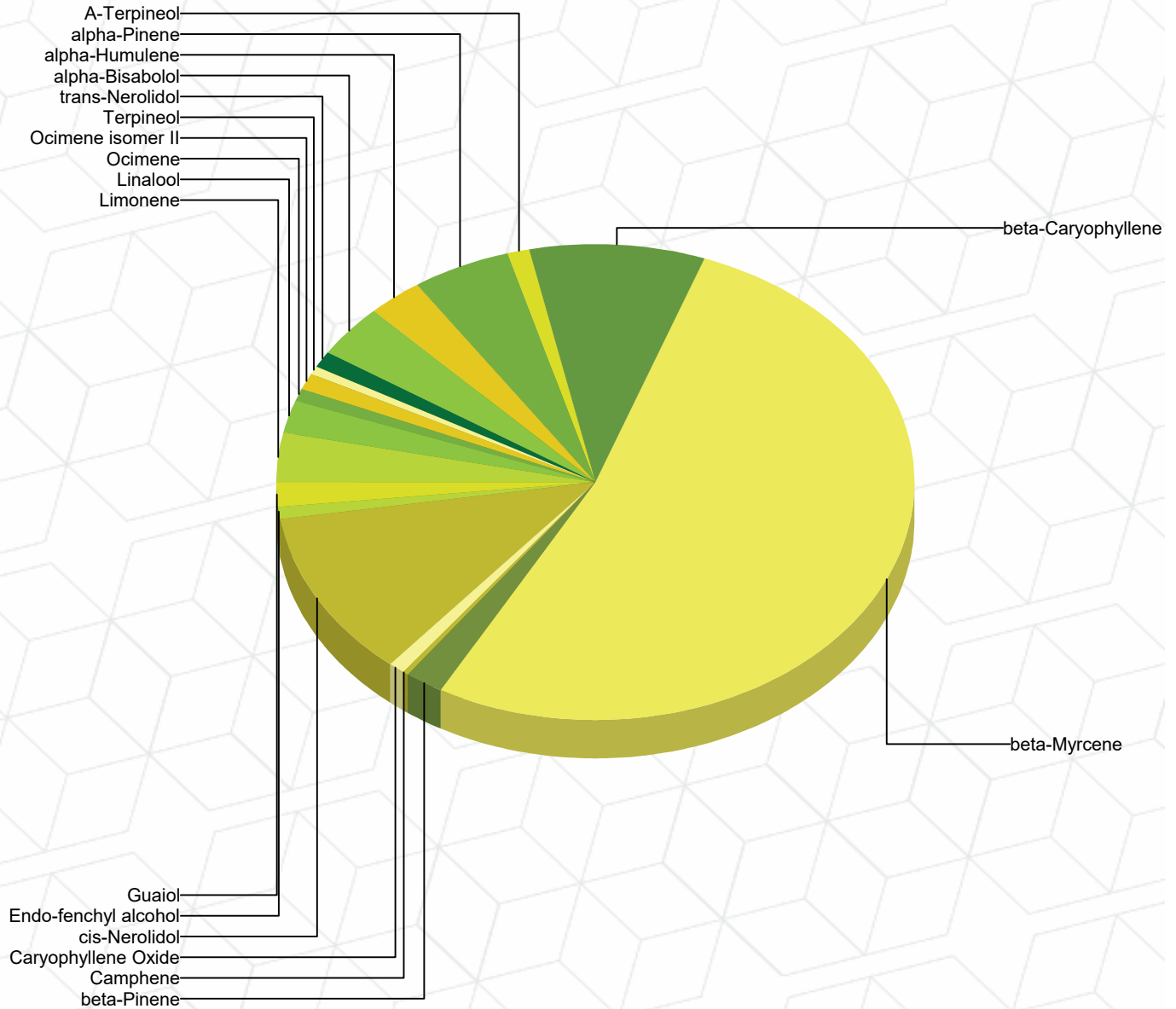
Source ID:

Date Sampled: 01/13/20

Date Accepted: 01/13/20

Hemp Inc. / Hemp University

Terpene Profile



Percentage of Total Terpenes Identified



Russell Kuhfeld

Russell Kuhfeld
Quality Officer - 1/15/2020

All QC samples met acceptance criteria of the method; data available upon request. These results relate only to the sample included on this report. The report may not be reproduced except in full, without the written permission of Green Leaf Lab.

Lab results apply to the sample as received, samples were not collected per OAR 333-007 requirements



Quality Control Potency

Batch: 2003018 - 215-Hemp

Blank(2003018-BLK1)						
Analyte	Result	LOQ	Units	%Recovery Limits	Extracted	Analyzed
THCA	< LOQ	0.002920	%		01/14/20 10:49	01/15/20 00:28
delta 9-THC	< LOQ	0.009080	%		01/14/20 10:49	01/15/20 00:28
delta 8-THC	< LOQ	0.004490	%		01/14/20 10:49	01/15/20 00:28
Exo-THC	< LOQ	0.004175	%		01/14/20 10:49	01/15/20 00:28
THCV	< LOQ	0.005055	%		01/14/20 10:49	01/15/20 00:28
THCVA	< LOQ	0.001885	%		01/14/20 10:49	01/15/20 00:28
CBD	< LOQ	0.001555	%		01/14/20 10:49	01/15/20 00:28
CBDA	< LOQ	0.002075	%		01/14/20 10:49	01/15/20 00:28
CBDV	< LOQ	0.005000	%		01/14/20 10:49	01/15/20 00:28
CBDVA	< LOQ	0.001640	%		01/14/20 10:49	01/15/20 00:28
CBN	< LOQ	0.002990	%		01/14/20 10:49	01/15/20 00:28
CBG	< LOQ	7.900E-4	%		01/14/20 10:49	01/15/20 00:28
CBGA	< LOQ	7.900E-4	%		01/14/20 10:49	01/15/20 00:28
CBC	< LOQ	0.008965	%		01/14/20 10:49	01/15/20 00:28

Reference(2003018-SRM1)						
Analyte	% Recovery	LOQ	Units	%Recovery Limits	Extracted	Analyzed
THCA	81.6	0.002920	%	80-120	01/14/20 10:49	01/15/20 00:50
delta 9-THC	111	0.009080	%	80-120	01/14/20 10:49	01/15/20 00:50
CBD	107	0.001555	%	80-120	01/14/20 10:49	01/15/20 00:50
CBDA	90.0	0.002075	%	80-120	01/14/20 10:49	01/15/20 00:50

Terpene Analysis

Batch: 2003018 - 215-Hemp

Blank(2003018-BLK2)						
Analyte	Result	LOQ	Units	%Recovery Limits	Extracted	Analyzed
alpha-Bisabolol	< LOQ	8.000E-4	%		01/14/20 10:49	01/15/20 02:34
Camphene	< LOQ	8.000E-4	%		01/14/20 10:49	01/15/20 02:34
Camphor	< LOQ	8.000E-4	%		01/14/20 10:49	01/15/20 02:34
3-Carene	< LOQ	8.000E-4	%		01/14/20 10:49	01/15/20 02:34
beta-Caryophyllene	< LOQ	8.000E-4	%		01/14/20 10:49	01/15/20 02:34
Caryophyllene Oxide	< LOQ	8.000E-4	%		01/14/20 10:49	01/15/20 02:34
alpha-Cedrene	< LOQ	8.000E-4	%		01/14/20 10:49	01/15/20 02:34
Cedrol	< LOQ	8.000E-4	%		01/14/20 10:49	01/15/20 02:34
Endo-fenchyl alcohol	< LOQ	8.000E-4	%		01/14/20 10:49	01/15/20 02:34
Eucalyptol	< LOQ	8.000E-4	%		01/14/20 10:49	01/15/20 02:34
Fenchone	< LOQ	8.000E-4	%		01/14/20 10:49	01/15/20 02:34
Geraniol	< LOQ	8.000E-4	%		01/14/20 10:49	01/15/20 02:34
Geranyl acetate	< LOQ	8.000E-4	%		01/14/20 10:49	01/15/20 02:34



Russell Kuhfeld

Russell Kuhfeld
Quality Officer - 1/15/2020

All QC samples met acceptance criteria of the method; data available upon request. These results relate only to the sample included on this report. The report may not be reproduced except in full, without the written permission of Green Leaf Lab.

Lab results apply to the sample as received, samples were not collected per OAR 333-007 requirements



Quality Control Terpene Analysis (Continued)

Batch: 2003018 - 215-Hemp (Continued)

Blank(2003018-BLK2)						
Analyte	Result	LOQ	Units	%Recovery Limits	Extracted	Analyzed
Guaiol	< LOQ	8.000E-4	%		01/14/20 10:49	01/15/20 02:34
Hexahydrothymol	< LOQ	8.000E-4	%		01/14/20 10:49	01/15/20 02:34
alpha-Humulene	< LOQ	8.000E-4	%		01/14/20 10:49	01/15/20 02:34
Isoborneol	< LOQ	8.000E-4	%		01/14/20 10:49	01/15/20 02:34
Isopulegol	< LOQ	8.000E-4	%		01/14/20 10:49	01/15/20 02:34
Limonene	< LOQ	8.000E-4	%		01/14/20 10:49	01/15/20 02:34
Linalool	< LOQ	8.000E-4	%		01/14/20 10:49	01/15/20 02:34
p-Mentha-1,5-diene	< LOQ	8.000E-4	%		01/14/20 10:49	01/15/20 02:34
beta-Myrcene	< LOQ	8.000E-4	%		01/14/20 10:49	01/15/20 02:34
trans-Nerolidol	< LOQ	8.000E-4	%		01/14/20 10:49	01/15/20 02:34
Ocimene	< LOQ	8.000E-4	%		01/14/20 10:49	01/15/20 02:34
alpha-Pinene	< LOQ	8.000E-4	%		01/14/20 10:49	01/15/20 02:34
beta-Pinene	< LOQ	8.000E-4	%		01/14/20 10:49	01/15/20 02:34
Pulegone	< LOQ	8.000E-4	%		01/14/20 10:49	01/15/20 02:34
Sabinene	< LOQ	8.000E-4	%		01/14/20 10:49	01/15/20 02:34
Sabinene hydrate	< LOQ	8.000E-4	%		01/14/20 10:49	01/15/20 02:34
gamma-Terpinene	< LOQ	8.000E-4	%		01/14/20 10:49	01/15/20 02:34
alpha-Terpinene	< LOQ	8.000E-4	%		01/14/20 10:49	01/15/20 02:34
Terpineol	< LOQ	8.000E-4	%		01/14/20 10:49	01/15/20 02:34
Terpinolene	< LOQ	8.000E-4	%		01/14/20 10:49	01/15/20 02:34
Valencene	< LOQ	8.000E-4	%		01/14/20 10:49	01/15/20 02:34
B Y-Terpineol	< LOQ	8.000E-4	%		01/14/20 10:49	01/15/20 02:34
Nerol	< LOQ	8.000E-4	%		01/14/20 10:49	01/15/20 02:34
A-Terpineol	< LOQ	8.000E-4	%		01/14/20 10:49	01/15/20 02:34
cis-Nerolidol	< LOQ	8.000E-4	%		01/14/20 10:49	01/15/20 02:34
Borneol	< LOQ	8.000E-4	%		01/14/20 10:49	01/15/20 02:34
Ocimene isomer II	< LOQ	8.000E-4	%		01/14/20 10:49	01/15/20 02:34
Ocimene isomer I	< LOQ	8.000E-4	%		01/14/20 10:49	01/15/20 02:34

Reference(2003018-SRM2)						
Analyte	% Recovery	LOQ	Units	%Recovery Limits	Extracted	Analyzed
beta-Caryophyllene	113	8.071E-4	%	70-130	01/14/20 10:49	01/15/20 03:17
alpha-Humulene	189	8.071E-4	%	70-130	01/14/20 10:49	01/15/20 03:17
beta-Myrcene	80.2	8.071E-4	%	70-130	01/14/20 10:49	01/15/20 03:17



Russell Kuhfeld

Russell Kuhfeld
Quality Officer - 1/15/2020

All QC samples met acceptance criteria of the method; data available upon request. These results relate only to the sample included on this report. The report may not be reproduced except in full, without the written permission of Green Leaf Lab.

Lab results apply to the sample as received, samples were not collected per OAR 333-007 requirements