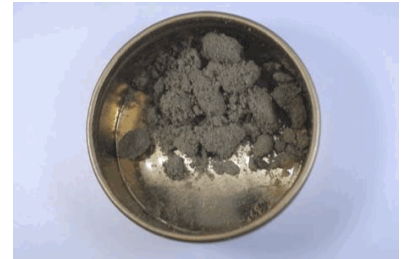


EVIO Labs Medford (pka Kenevir Research)  
 540 East Vilas Road, Suite F, Central Point, OR 97502  
 541-668-7444 / OLCC 010-1001626980D / www.EVIOLabs.com

## Special Sauce Kief Horn Creek Hemp Info Only



**Confident Cannabis ID:** 2012KR0064.6493  
**Sample ID:** M202032-01  
**Matrix:** Kief  
**METRC Batch #:**  
**Sampling Method/SOP:** Client  
**Date Sampled:** NA  
**Date Accepted:** 12/09/20  
**Harvest/Process Lot ID:**

**Batch ID:**  
**Batch Size (g):**  
**Unit for Sale:**  
**Harvest/Production Date:**

### Cannabinoid Analysis

**FOR INFORMATIONAL USE ONLY - NOT FOR REGULATORY PURPOSES**

Date/Time Extracted: 12/10/20 09:03  
 Date/Time Analyzed: 12/10/20 23:52

Analysis Method/SOP: SOP.T.40.020

Cannabinoids	LOQ(%)	mg/g	% weight	Cannabinoid Profile
<b>Total THC</b> ((THCA*0.877)+Δ9THC)		<b>5.99</b>	<b>0.599</b>	
<b>Total CBD</b> ((CBDA*0.877)+CBD)		<b>153.80</b>	<b>15.380</b>	
THCA	0.100	6.83	0.683	
delta 9-THC	0.100	< LOQ	< LOQ	
delta 8-THC	0.100	< LOQ	< LOQ	
THCV	0.100	< LOQ	< LOQ	
CBGA	0.100	8.29	0.829	
CBDA	0.100	171.00	17.1	
CBD	0.100	3.83	0.383	
CBDV	0.100	< LOQ	< LOQ	
CBN	0.100	< LOQ	< LOQ	
CBG	0.100	< LOQ	< LOQ	
CBC	0.100	< LOQ	< LOQ	
THCV-A	0.100	< LOQ	< LOQ	
CBDV-A	0.100	< LOQ	< LOQ	
CBCA	0.100	8.55	0.855	
Sum of tested Cannabinoids	0.100	199.00	19.9	

"Total THC" and "Total CBD" are calculated values and are an Oregon reporting requirement (OAR 333-064-0100). For Cannabinoid analysis, only delta 9-THC, THCA, CBD, CBDA are ORELAP accredited analytes. Cannabinoid values reported for plant matter are dry weight corrected; Oregon Water Activity action level is 0.65Aw and Oregon Moisture Content action level is 15%, Samples above limit will be highlighted RED; FD = Field Duplicate; LOQ = Limit of Quantitation.

Stephanie Moon  
 Laboratory Director - 12/17/2020

EVIO Labs Medford (pka Kenevir Research)  
 540 East Vilas Road, Suite F, Central Point, OR 97502  
 541-668-7444 / OLCC 010-1001626980D / www.EVIOLabs.com

FOR INFORMATIONAL USE ONLY - NOT FOR REGULATORY PURPOSES

## Special Sauce Kief

Horn Creek Hemp

Info Only

Sample ID: M202032-01 METRC Batch #:

Matrix: Keif

Date Sampled: NA

Date Accepted: 12/09/20

Batch ID:

Batch Size:

Sampling Method/SOP: Client

### Terpene Analysis

Date/Time Extracted: 12/16/20 12:27

Analysis Method/SOP: SOP.T.40.092

Date/Time Analyzed: 12/17/20 10:15

Analyte	LOQ (mg/g)	Mass (mg/g)	Mass (%)	Analyte	LOQ (mg/g)	Mass (mg/g)	Mass (%)
alpha-Pinene	0.500	< LOQ	< LOQ	beta-Pinene	0.500	< LOQ	< LOQ
Camphene	0.500	< LOQ	< LOQ	Sabinene	0.500	< LOQ	< LOQ
Sabinene hydrate	0.500	< LOQ	< LOQ	beta-Myrcene	0.500	< LOQ	< LOQ
p-Mentha-1,5-diene	0.500	< LOQ	< LOQ	(+)-3-Carene	0.500	< LOQ	< LOQ
alpha-Terpinene	0.500	< LOQ	< LOQ	gamma-Terpinene	0.500	< LOQ	< LOQ
Limonene	0.500	< LOQ	< LOQ	Eucalyptol	0.500	< LOQ	< LOQ
Guaiol	0.500	1.66	0.166	Terpinolene	0.500	< LOQ	< LOQ
Linalool	0.500	< LOQ	< LOQ	Camphor	0.500	< LOQ	< LOQ
(+)-Camphor	0.500	< LOQ	< LOQ	(-)-Camphor	0.500	< LOQ	< LOQ
Isopulegol	0.500	< LOQ	< LOQ	Isoborneol	0.500	< LOQ	< LOQ
Borneol	0.500	< LOQ	< LOQ	Hexahydrothymol	0.500	< LOQ	< LOQ
Geraniol	0.500	< LOQ	< LOQ	(+)-Pulegone	0.500	< LOQ	< LOQ
Nerol	0.500	< LOQ	< LOQ	cis-Nerolidol	0.500	< LOQ	< LOQ
trans-Nerolidol	0.500	< LOQ	< LOQ	Geranyl acetate	0.500	< LOQ	< LOQ
alpha-Cedrene	0.500	< LOQ	< LOQ	trans-Caryophyllene	0.500	1.47	0.147
Caryophyllene Oxide	0.500	0.558	0.0558	alpha-Humulene	0.500	0.644	0.0644
Valencene	0.500	< LOQ	< LOQ	alpha-Farnesene	0.500	< LOQ	< LOQ
beta-Farnesene	0.500	< LOQ	< LOQ	Cedrol	0.500	< LOQ	< LOQ
alpha-Bisabolol	0.500	2.08	0.208	Fenchone	0.500	< LOQ	< LOQ
Fenchyl Alcohol	0.500	< LOQ	< LOQ	trans, beta- Ocimene	0.500	< LOQ	< LOQ
beta, cis- Ocimene	0.500	< LOQ	< LOQ	Terpineol	0.500	< LOQ	< LOQ
Total (Sum):						6.41	0.64

Analysis performed on GCMS with confirmation ion identification. Terpene analysis is not ORELAP accredited. Results reported as wet weight, or as is. LOQ = Limit of Quantitation. Terpene analysis performed in conjunction with EVIO Labs Portland.



Stephanie Moon  
 Laboratory Director - 12/17/2020

**EVIO Labs Medford (pka Kenevir Research)**  
**540 East Vilas Road, Suite F, Central Point, OR 97502**  
**541-668-7444 / OLCC 010-1001626980D / www.EVIOLabs.com**

## Quality Control

**Batch: M20L055 - SOP.T.30.050 Prep for Cannabinoids**

Blank(M20L055-BLK1)			Extracted: 12/10/20 09:03		Analyzed: 12/10/20 23:20		
Analyte	Result	LOQ	Recovery Limits	Analyte	Result	LOQ	Recovery Limits
THCA	< LOQ	0.100 (%)	< LOQ	delta 9-THC	< LOQ	0.100 (%)	< LOQ
delta 8-THC	< LOQ	0.100 (%)	< LOQ	THCV-A	< LOQ	0.100 (%)	< LOQ
THCV	< LOQ	0.100 (%)	< LOQ	CBDA	< LOQ	0.100 (%)	< LOQ
CBD	< LOQ	0.100 (%)	< LOQ	CBDV-A	< LOQ	0.100 (%)	< LOQ
CBDV	< LOQ	0.100 (%)	< LOQ	CBG	< LOQ	0.100 (%)	< LOQ
CBGA	< LOQ	0.100 (%)	< LOQ	CBN	< LOQ	0.100 (%)	< LOQ
CBCA	< LOQ	0.100 (%)	< LOQ	CBC	< LOQ	0.100 (%)	< LOQ
Sum of tested Cannabinoid:	< LOQ	0.100 (%)	< LOQ				

LCS(M20L055-BS1)			Extracted: 12/10/20 09:03		Analyzed: 12/10/20 23:36		
Analyte	% Recovery	LOQ	Recovery Limits	Analyte	% Recovery	LOQ	Recovery Limits
THCA	96.0	(%)	70-130	delta 9-THC	99.1	(%)	70-130
THCV	95.9	(%)	70-130	CBDA	96.5	(%)	70-130
CBD	93.9	(%)	70-130	CBG	105	(%)	70-130
CBGA	99.8	(%)	70-130	CBN	102	(%)	70-130
CBCA	93.1	(%)	70-130	CBC	98.5	(%)	70-130

**Batch: P20L076 - SOP.T.40.092 PDX Terpenoid Analysis via GC-MS**

Blank(P20L076-BLK1)			Extracted: 12/16/20 12:27		Analyzed: 12/17/20 10:15		
Analyte	Result	LOQ	Recovery Limits	Analyte	Result	LOQ	Recovery Limits
alpha-Pinene	< LOQ	0.200 (mg/g)	< LOQ	beta-Pinene	< LOQ	0.200 (mg/g)	< LOQ
Camphene	< LOQ	0.200 (mg/g)	< LOQ	Sabinene	< LOQ	0.200 (mg/g)	< LOQ
Sabinene hydrate	< LOQ	0.200 (mg/g)	< LOQ	beta-Myrcene	< LOQ	0.200 (mg/g)	< LOQ
p-Mentha-1,5-diene	< LOQ	0.200 (mg/g)	< LOQ	(+)-3-Carene	< LOQ	0.200 (mg/g)	< LOQ
alpha-Terpinene	< LOQ	0.200 (mg/g)	< LOQ	gamma-Terpinene	< LOQ	0.200 (mg/g)	< LOQ
Limonene	< LOQ	0.200 (mg/g)	< LOQ	Eucalyptol	< LOQ	0.200 (mg/g)	< LOQ
Guaiol	< LOQ	0.200 (mg/g)	< LOQ	Terpinolene	< LOQ	0.200 (mg/g)	< LOQ
Linalool	< LOQ	0.200 (mg/g)	< LOQ	Camphor	< LOQ	0.200 (mg/g)	< LOQ
(+)-Camphor	< LOQ	0.200 (mg/g)	< LOQ	(-)-Camphor	< LOQ	0.200 (mg/g)	< LOQ
Isopulegol	< LOQ	0.200 (mg/g)	< LOQ	Isoborneol	< LOQ	0.200 (mg/g)	< LOQ
Borneol	< LOQ	0.200 (mg/g)	< LOQ	Hexahydrothymol	< LOQ	0.200 (mg/g)	< LOQ
Geraniol	< LOQ	0.200 (mg/g)	< LOQ	(+)-Pulegone	< LOQ	0.200 (mg/g)	< LOQ
Nerol	< LOQ	0.200 (mg/g)	< LOQ	cis-Nerolidol	< LOQ	0.200 (mg/g)	< LOQ
trans-Nerolidol	< LOQ	0.200 (mg/g)	< LOQ	Geranyl acetate	< LOQ	0.200 (mg/g)	< LOQ
alpha-Cedrene	< LOQ	0.200 (mg/g)	< LOQ	trans-Caryophyllene	< LOQ	0.200 (mg/g)	< LOQ
Caryophyllene Oxide	< LOQ	0.200 (mg/g)	< LOQ	alpha-Humulene	< LOQ	0.200 (mg/g)	< LOQ
Valencene	< LOQ	0.200 (mg/g)	< LOQ	alpha-Farnesene	< LOQ	0.200 (mg/g)	< LOQ



Stephanie Moon  
Laboratory Director - 12/17/2020

EVIO Labs Medford (pka Kenevir Research)  
 540 East Vilas Road, Suite F, Central Point, OR 97502  
 541-668-7444 / OLCC 010-1001626980D / www.EVIOLabs.com

## Quality Control

**Batch: P20L076 - SOP.T.40.092 PDX Terpenoid Analysis via GC-MS (Continued)**

Blank(P20L076-BLK1)			Extracted: 12/16/20 12:27		Analyzed: 12/17/20 10:15		
Analyte	Result	LOQ	Recovery Limits	Analyte	Result	LOQ	Recovery Limits
beta-Farnesene	< LOQ	0.200 (mg/g)	< LOQ	Cedrol	< LOQ	0.200 (mg/g)	< LOQ
alpha-Bisabolol	< LOQ	0.200 (mg/g)	< LOQ	Fenchone	< LOQ	0.200 (mg/g)	< LOQ
Fenchyl Alcohol	< LOQ	0.200 (mg/g)	< LOQ	trans, beta- Ocimene	< LOQ	0.200 (mg/g)	< LOQ
beta, cis- Ocimene	< LOQ	0.200 (mg/g)	< LOQ	Terpineol	< LOQ	0.200 (mg/g)	< LOQ



Stephanie Moon  
 Laboratory Director - 12/17/2020